

Superior safety, greater stability  
Faster transfers, enduring reliability

# **SWINGLIFT®**

## **QUAD HC4020 - I Beam chassis**

**30 TON PAYLOAD**  
**ON ROAD**



- “Leg-Over®” Stabilisers for ultimate safety and stability
- Versatility and flexibility for your business
- Fast and easy operation
- Lightest tare side loader available in New Zealand



The internationally available I-Beam chassis was introduced to the New Zealand market by Swinglift® to offer a lower cost design to complement its highly-regarded and widely used lattice chassis and providing customers with a benchmark when comparing a Swinglift® chassis with alternative brand names of competitors sideloaders.

#### KEY FEATURES of the SWINGLIFT® I Beam chassis:

- Flat slide wear pads
- Adjustable precision machined side guide blocks
- Smooth transition between 20 and 40 foot container positions
- All slide wear pads and guides can be replaced in situ
- Reduced down time and maintenance costs when compared to competitors I-Beam designs.

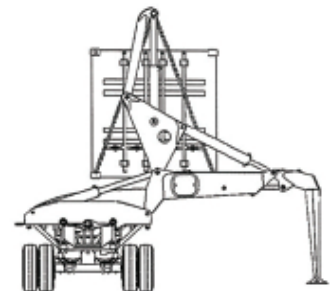
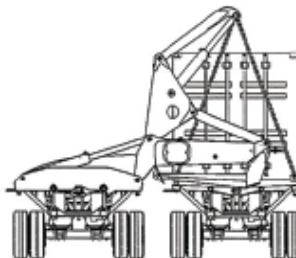
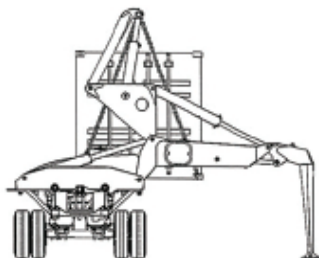
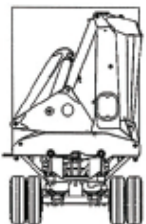
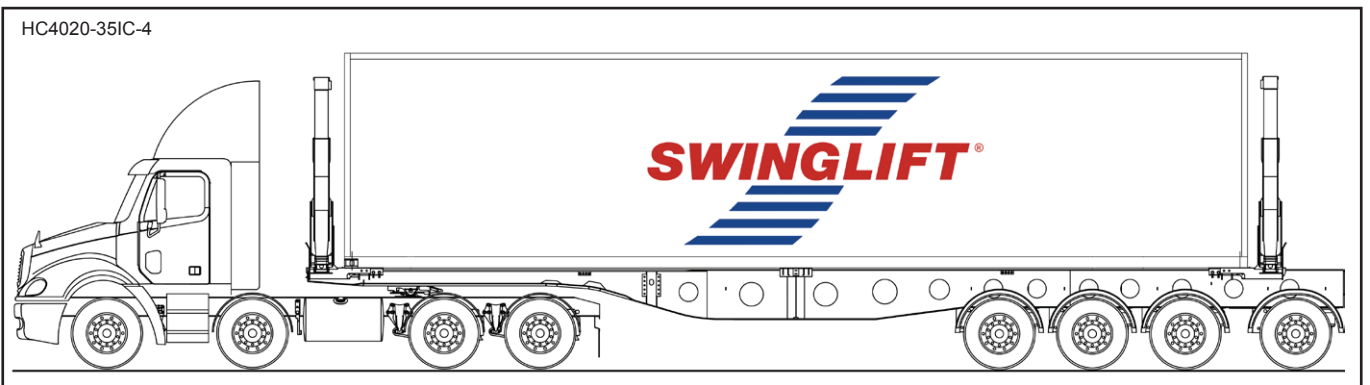
#### HC4020 - 35IC-4

The Quad I-Beam Swinglift offers additional advantages:

- Tare weights from as low as 9220 Kg
- 35 Ton lifting capacity
- Capable of legally carrying 30 Ton containers on road
- Wide range of customisable options are available
- Fastest sideloader container transfer available

LIGHTEST TARE SIDE LOADER AVAILABLE IN NEW ZEALAND

TRI-AXLE MODELS ALSO AVAILABLE



#### Swinglift New Zealand

150 View Road, Rotorua, New Zealand

[www.swinglift.co.nz](http://www.swinglift.co.nz)

#### Contact

Head Office + 64 7 348 7746

Mark Janssen + 64 21 350 000

Don Patchell + 64 21 220 2900

